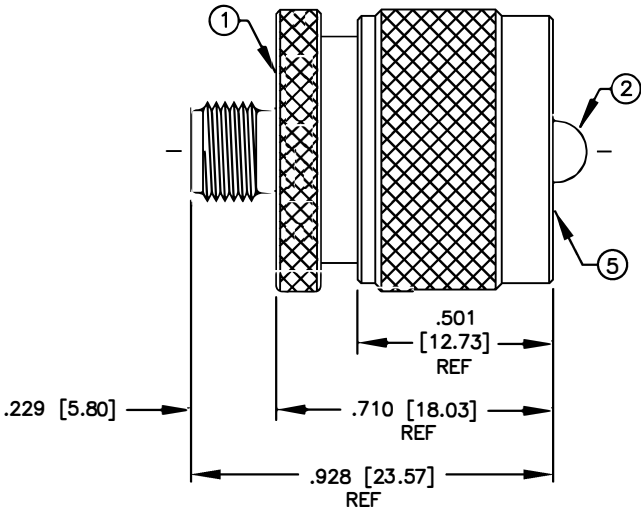


SPECIFICATION CONTROL DRAWING				REV	DESCRIPTION	DWN	DATE	APPROVED
THIS DRAWING CONTAINS INFORMATION PROPRIETARY TO RF INDUSTRIES, LTD. ANY UNAUTHORIZED USE OF THIS DRAWING IS EXPRESSLY PROHIBITED. ANY VIOLATION IS PUNISHABLE UNDER U.S. COPYRIGHT LAWS.				A	ENGINEERING RELEASE	KMM	1/3/95	R. RICE



SPECIFICATIONS:

IMPEDANCE: NON-CONSTANT
VOLTAGE RATING: 500 VOLTS RMS
FREQUENCY RANGE: 0-500 MHz

DIMENSIONS ARE IN INCHES OVER MILLIMETERS.

UNLESS OTHERWISE NOTED TOLERANCES ARE:

DECIMALS ANGLES

Sales@LANshack.com | 888-568-1230

6	RETAINING RING	1	QQB613 (BRASS)	NONE
5	SHELL	1	BRASS	NICKEL
4	DIELECTRIC	1	PTFE	NONE
3	DIELECTRIC	1	PTFE	NONE
2	PIN	1	BRASS	GOLD
1	BODY	1	BRASS	NICKEL

DRAWN	K. MAXWELL	1/3/95
CHECKED		
ISSUED	H. HILL	1/3/95
ORJ DRAWN	K. MAXWELL	1/3/95

QT-RSA-3474

SMA FEMALE TO UHF MALE

SIZE	CABLE GROUP	DWG NO.	REV
A	N/A	8427A	A

SCALE: 2:1	CAD FILE ARC 178	SHEET 1 OF 1
------------	------------------	--------------

ITEM	DESCRIPTION	QTY	MATERIAL	FINISH	APPROVALS	DATE
------	-------------	-----	----------	--------	-----------	------